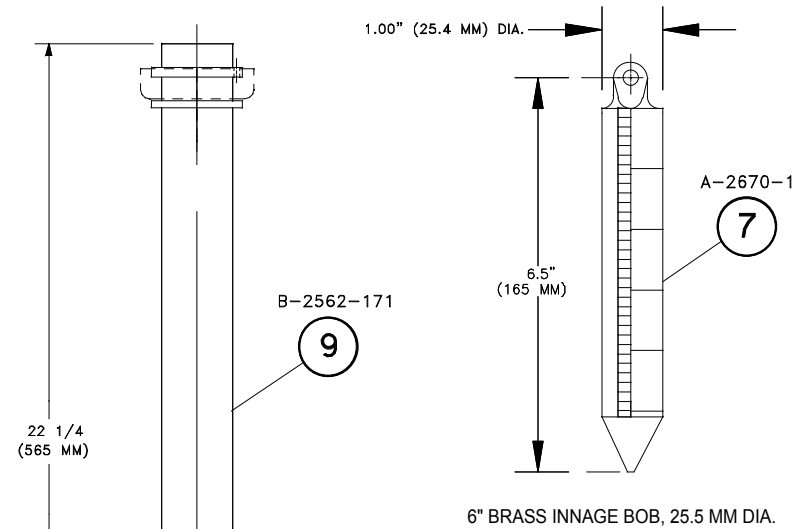
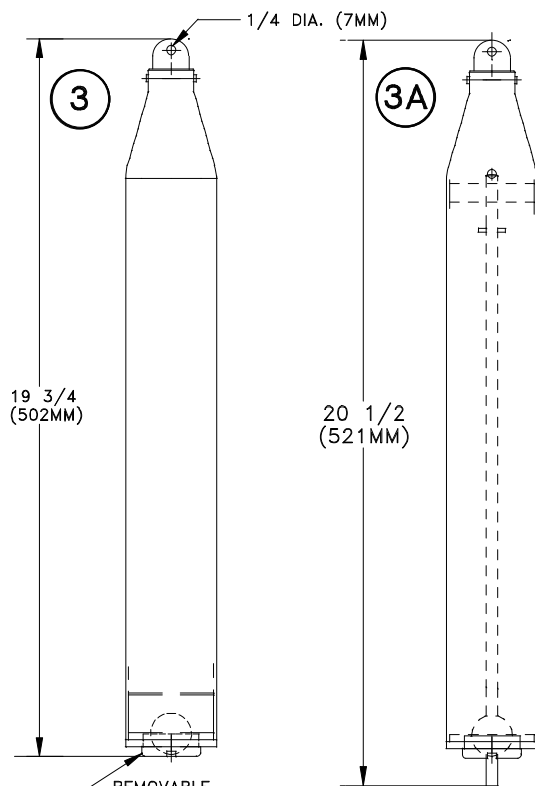


UNAUTHORIZED USE, MANUFACTURE OR REPRODUCTION IN WHOLE OR PART, IS STRICTLY PROHIBITED.

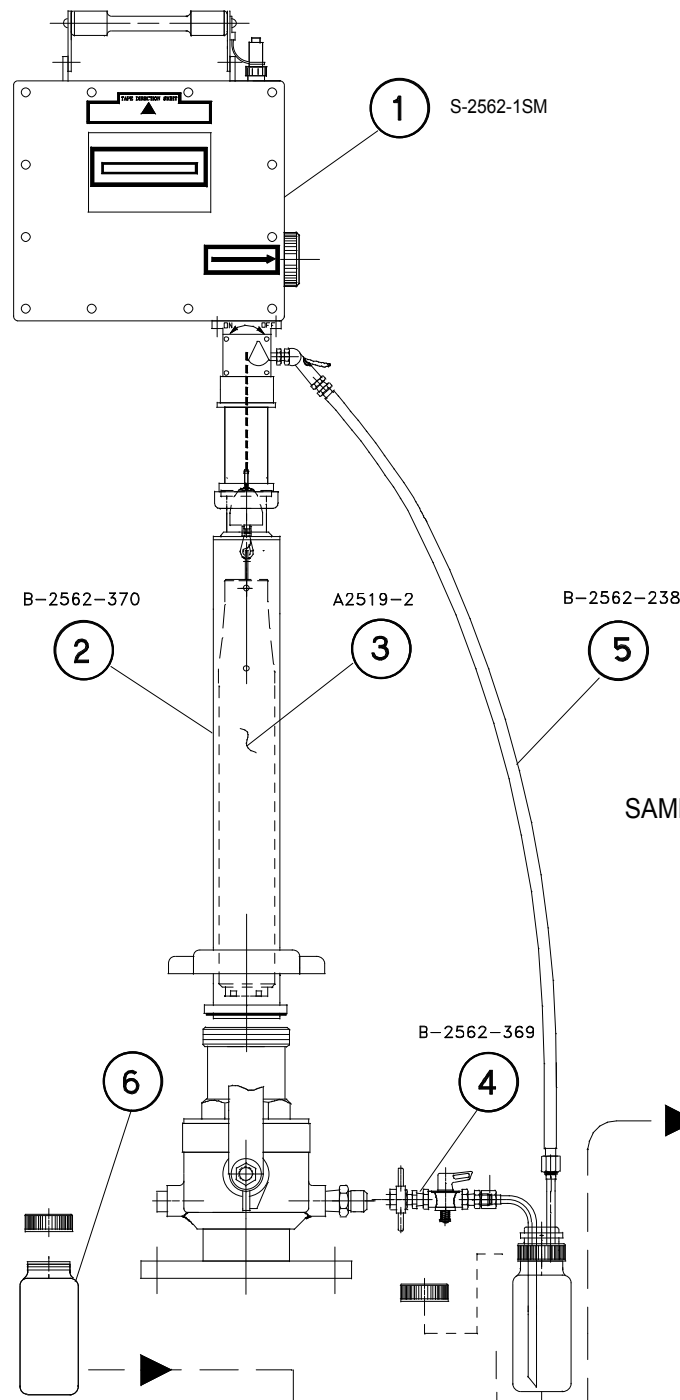


6" BRASS INNAGE BOB, 25.5 MM DIA.



1 LITER ZONE SAMPLER TUBE STD. SUPPLY

1 LITER BOTTOM SAMPLER TUBE SUPPLIED PER ORDER



3" SIZE MBS-3 VALVE SHOW ABOVE FOR 1 LITER SAMPLING.

BASIC SYSTEM COMPONENTS (PETROLEUM SERVICE)

1. CLOSED SAMPLING TAPE, STN. SL. TAPE 30 METER STD. LENGTH.
2. SAMPLER BARREL ADAPTOR FOR 1 LITER SAMPLER. B2562370
3. 1 LITER ALL STN. STL. ZONE SAMPLER STD. SUPPLY, A-2519-2.
- 3A. 1 LITER STN. STL. BOTTOM SAMPLER AS ORDERED, A2519-2A.
4. SAMPLE BOTTLE FILL ATTACHMENT. PT # BTLFL-B2562-369
5. VAPOR RETURN HOSE ASS'Y PT # HSEA2562-238SG
6. (1 PC) 1 L. SAMPLE BOTTLE, FHDPE. PK'S 6, 8, 12 PER CARTON. WITH INDIVIDUAL SELF SEALING CAPS.
7. STANDARD API 6" BRASS BOB, 25.4MM A-2670-1, METRIC / ENGLISH MARKINGS
8. CARRYING CASES, HARD, 1 PC FOR PT 1 AND 3, 1 PC FOR PARTS 2, 4, 5, & 7 OR PT. 9 AND 10, SEE BELOW NOTES.

OPTIONAL BELOW FOR TANK DRYNESS CHECKING USING PT # 9.

9. SOUNDING/INNAGE ATTACHMENT BARREL FOR FIXED IN PLACE SAMPLING SYSTEM, B-2562-171 FOR USE WITH 25 & 50 MM BORE MMC VAPOR VALVES.

INSTRUCTION MANUAL PACKED WITH PT.#1 CARRYING CASE

REV. A DRAWING UPDATED, 10/09/11

1 LITER PORTABLE ((FIXED-IN-PLACE)) SAMPLING SYSTEM GAS TIGHT FOR CLOSED SYSTEMS APPL.	PETROLEUM SERVICE SAMPLING SYSTEM	
	MMC INTERNATIONAL CORP INWOOD, NEW YORK	
DRAWN: F.S.GIANNONE DATE: 05/22/11	DWG. NO. B2562-366-PET	REV A
APPD: DATE:		